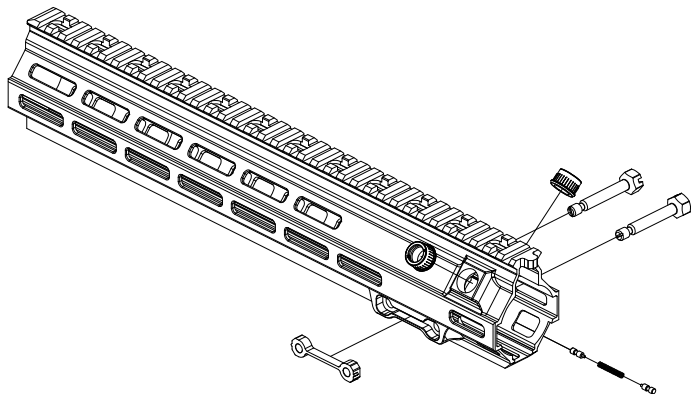


# GEISSELE<sup>®</sup>

## AUTOMATICS

We Manufacture Confidence<sup>®</sup>



### SUPER MODULAR RAIL HK-417 M-LOK Installation Instructions

Firearm safety is **YOUR** responsibility. You must memorize and put into practice the 4 Rules of Firearm Safety:

- 1. ASSUME EVERY WEAPON IS LOADED.**
- 2. KEEP YOUR FINGER OFF THE TRIGGER UNTIL YOU ARE READY TO SHOOT.**
- 3. DO NOT LET THE MUZZLE POINT AT ANYTHING YOU ARE NOT WILLING TO DESTROY.**
- 4. KNOW YOUR TARGET AND WHAT IS BEYOND.**

#### HK417 DESCRIPTION

The Super Modular Rail HK417 was designed to replace the standard rail on an HK417 or HK MR762 weapon platform. The rail system utilizes the stock HK barrel nut, but incorporates the strength, rigidity and modularity expected of a Geissele product. Made from 6061-T6 aluminum and finished in type 3 hardcoat anodized, the SMR HK417 meets military specifications.

Featuring MLOK mounting options at the 2, 3, 6, 9 and 10 o'clock positions, as well as featuring a full picattiny rail along the top. The Geissele SMR HK417 is trusted by our Nation's elite warfighters, and their input was taken into consideration while developing the feature and performance rich SMR HK417.

#### INSTALLATION INSTRUCTIONS

The Geissele Super Modular Rail (SMR) is easy to install. However, it will need some specialized tools that you may not have. Installation by a certified gunsmith is recommended. Essentially, the stock HK rail is removed in the normal manner, sling loops removed and the Geissele rail slid on just like the stock rail. Refer to Geissele drawing 05-536 (which is included with your new rail) for the positioning of the rail components.

1. Make sure weapon is unloaded. Remove the HK rail according to the HK manual. If the weapon is an MR762 proceed to step 3.
2. If the upper is a HK417 (not an MR762) the sling loops on the outside of the gas block will need to be removed. The gas block is made from hard and tough steel and the loop material will not cut easily with a saw. The recommended procedure is to use an industrial sander to sand the loops near flush.
3. Slide the SMR handguard (**Item 1**) onto the stock HK barrel nut. Be very careful when doing this as the clearance between the OD of the barrel nut and ID of the handguard is precisely machined to about 0.001" clearance. Burrs or dings on the barrel nut will not allow the handguard to slide freely. It is recommended to lightly coat the barrel nut OD and ID of the handguard with a light film of oil before installing until you get the hang of installation. Slide the handguard against the barrel nut, and then use your fingers to align the other end of the handguard concentric to the barrel so the rail section is not cocked. By wiggling the handguard very slightly and pressing downward it will start on the barrel nut. Once it is about 1/2" onto the barrel nut it can be slid home. Do not force the handguard onto the barrel nut. If force is needed there is something wrong. Remove the handguard and inspect the OD and ID interface.
4. Install the rail mounting bolts. You may have to slightly slide the handguard to line up the holes with the grooves in the barrel nut in order for the bolts to start. Once the bolts start to turn a couple of revolutions it will become stiff to turn. The steel insert into which the bolts thread tighten is a locking insert, which means they will grip the bolt threads with a prevailing torque and prevent loosening or backing out of the bolts.
5. Tighten the rail mounting bolts to approximately 8 ft-lbs. The head of the bolts is sized for a 12 point 7/16" socket or wrench, or the wrench of a Leatherman<sup>®</sup> multitool. If a torque wrench is not available use your best tightening judgment but do not over tighten.

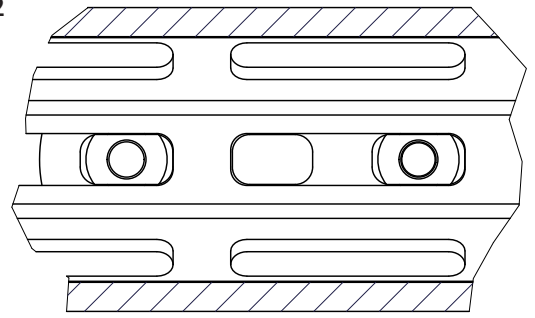
#### UTILIZING THE M-LOK ATTACHMENT SYSTEM

*The HK417 M-LOK has been designed using Magpul's advanced M-LOK modular locking accessory mounting system. This system allows the user to easily add or remove accessories based on mission requirements using a 1/8" hex key. Be sure to read the instructions below carefully, improper installation may cause permanent damage to your rail that is not covered by the Geissele warranty.*

6. To install make sure the nut is started onto the bolt with at least 1 full thread showing out the back of the nut (**Figure 1**). If one full thread is not showing, there is a chance that the M-LOK nut will not cam into the M-LOK slot properly. If this occurs and the screw is tightened, the M-LOK nut can pull through the rail leaving a gash in the rail and causing a burr in the surface.

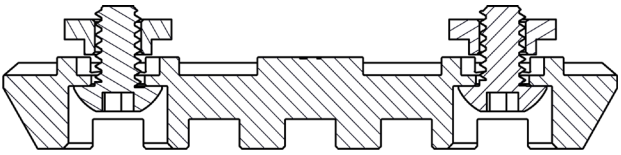
7. Align the nut with the recoil lugs so they pass through the M-LOK slots (**Figure 2**).
8. Begin to tighten the bolt one full turn with the hex key. The cammed nut will rotate, tighten, and eventually lock into place retaining the accessory on the handguard. Additional torque can be applied to hold the accessory in place (**Figure 3**).
9. Removing the accessory requires 1 turn counterclockwise. The cammed nut will align with the recoil lugs on the accessory allowing the accessory to come off the rail. Care should be taken to not remove the nut from the bolt or M-LOK accessory. Loosening the screw further than 1 turn may result in permanent damage to the rail.

**Figure 2**

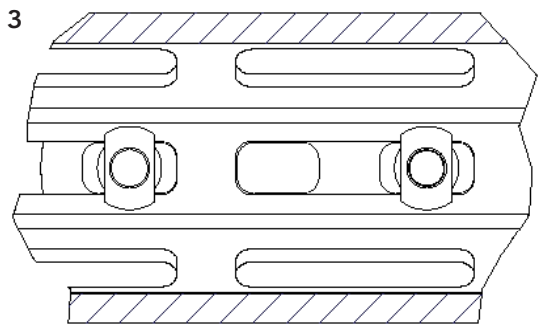


*Detail view showing the camming M-LOK nut unlocked and ready to insert or remove the accessory.*

**Figure 1**



**Figure 3**



*Detail view showing the camming M-LOK nuts locked in place to retain the accessory.*

**Thank You For Your Purchase.**  
**Contact Geissele Automatics with any questions.**

**GEISSELE AUTOMATICS • 800 NORTH WALES RD • NORTH WALES, PA 19454**  
**TEL: 610.272.2060 | FAX: 610.272.2069**  
**E-MAIL: INFO@GEISSELE.COM | WEB: WWW.GEISSELE.COM**  
**SMR HK417 M-LOK INSTRUCTIONS, VERSION 1 - 2/4/2019**

Parts List		
ITEM	QTY	PART NUM DESCRIPTION
1	1	02-760 HANDGUARD
2	2	02-216 INSERT SLING ATTACH
3	1	02-308 PRESS NUT, HK417 MB X 1.2 HOLE
4	2	02-755 RAIL MOUNTING BOLT
5	2	02-760 PLINGER, BOLT RETAINER
6	1	04-271 SPRING, BOLT RETAINER

**© THIS DRAWING IS PROPRIETARY AND CONFIDENTIAL**  
 THIS DRAWING HAS COPYRIGHT WHICH IS OWNED BY GEISSELE AUTOMATICS. NEITHER THIS DRAWING ITSELF NOR ARTICLE NOR COMPONENT ILLUSTRATED THEREIN MAY BE REPRODUCED BY WHOLE OR IN PART, IN ANY FORM WHATSOEVER WITHOUT PRIOR WRITTEN AUTHORITY FROM GEISSELE AUTOMATICS. THIS DRAWING HAS BEEN DELIVERED ON THE UNDERSTANDING THAT IT IS NOT TO BE USED IN ANY WAY AGAINST THE INTERESTS OF GEISSELE AUTOMATICS AND WILL BE RETURNED ON DEMAND.

<b>PHYSICAL PROPERTIES</b>	<b>UNLESS OTHERWISE SPECIFIED</b>	<b>ORIGINAL DATE</b>	<b>8/24/2016</b>
SU	303/304/316	<b>DRAFTSMAN</b>	<b>PKR</b>
ST	303/304/316	<b>ENGINEER</b>	<b>WHG</b>
EL	303/304/316	<b>APPROVED</b>	<b>WHG</b>
SA	303/304/316	<b>DATE</b>	<b>8/24/2016</b>
SP	303/304/316	<b>SCALE</b>	<b>1:1</b>
MATERIAL	303/304/316	<b>UNIT VOLUME</b>	<b>05-536</b>
FINISH	303/304/316	<b>UNIT WEIGHT</b>	<b>1.00</b>
HEAT TREATMENT	303/304/316	<b>SCALE</b>	<b>1:1</b>
FINAL PROTECTIVE FINISH	303/304/316	<b>REV</b>	<b>A</b>
		<b>DWG NO</b>	<b>05-536</b>
		<b>SHEET</b>	<b>1 OF 1</b>